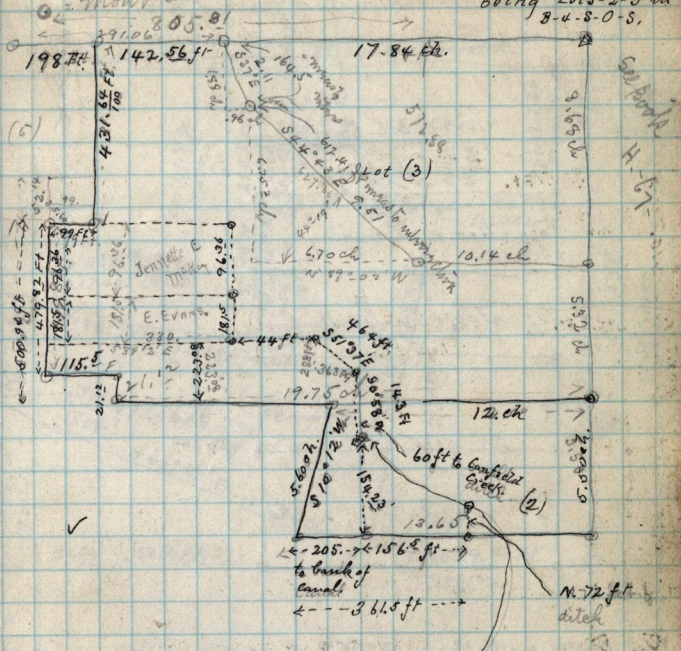


MARCH 5<sup>th</sup> 1989 287

Mount cast Adams & 2<sup>nd</sup> Survey for T. Evans, Estate.  
 Being Lots-2-3 in  
 8-u-s-0-s.



N 35° W 203 ft to  
 Junction of Canfield Creek  
 with City Canal, to be  
 established as cor of a certain piece  
 of land conveyed to A. M. Gillborn  
 Co.

Copy of deed from Wm F. Critchlow to  
 Geo. R. Hizz, dated Dec. 7-1872 - Recorded at  
 H. Page 173 - Part of N.W. 1/4 Sec. 4 Sp 5-N-R-1-W.  
 Beg. 1.40 ch. S. from N.W. cor. said 1/4 Sec. S. 8.60  
 E. 4.35 ch, N. 8.60 ch, W. 4.35 ch to beg. 3.74 a